

PROVIDE

PROVIDE sets off to promote and validate continuous professional development of VET professionals in regard to educational key competences.

In the beginning of December 2013 the PROVIDE partners met for the first time in Göttingen to discuss how the ambitious programme of the project can be brought to practice. The acronym stands for “PROMoting the Validation of Informal and non-formal learning and the Development of key competences for professionals in vocational Education.”



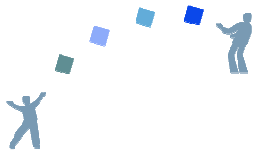
The project consortium consists of seven European institutions from Austria, Bulgaria, Germany, the Netherlands, and France. They share the goal to transfer innovation in regard to key com-

petences of professionals working in the vocational education and training sector and to give credit to their continuous professional development through competence validation. PROVIDE combines two targets: continuing professional development and the improvement of quality.

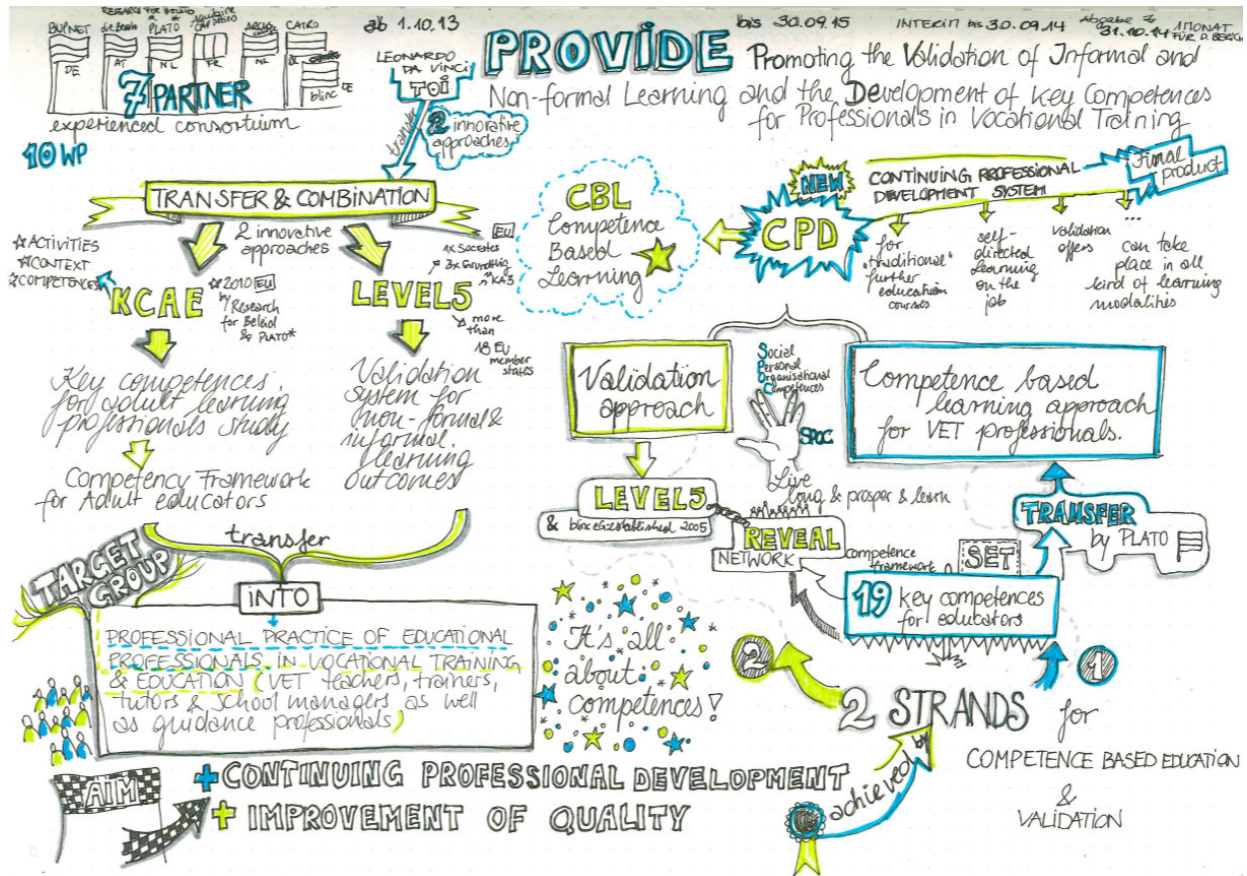
Objectives

PROVIDE aims at developing and piloting a learning approach for educational professionals in vocational education and training (VET) to promote and validate the development of their professional key competences. This shall be achieved by merging and further developing two approaches: the validation approach [LEVEL5](#) to validate learning outcomes in non-formal and informal learning contexts, on the one hand, and the Competency Framework for Adult Educators developed in the study “Key competences for adult learning professionals” ([KCAE](#)), on the hand. The emerging approach shall be transferred to the professional practice of educational staff in vocational learning (teachers, trainers, tutors and school/institution managers etc.)

More precisely, a competence based learning system for educational professionals will be developed so that the emerging PROVIDE system allows for acquiring and validating key competences in different learning contexts such as continuing vocational training for educational professionals or learning at the work place.



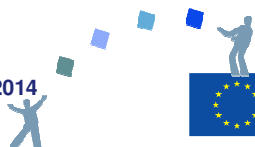
PROVIDE at a glance ...

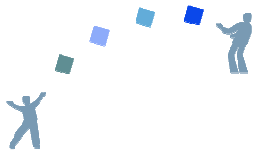


The main activities of PROVIDE are:

- 📌 creating an inventory of professional key competences based on a comprehensive needs analysis among the target groups;
- 📌 providing a system to facilitate the validation (assessment and evidencing) of key competences for educational professionals;
- 📌 developing a modular competence oriented learning approach transferable to different target groups and learning settings;
- 📌 developing and delivering a training seminar on the PROVIDE methodology for HR- and training managers responsible for CPD and/or decision takers;
- 📌 piloting the PROVIDE approach both in modular trainings and in training on the job;
- 📌 disseminating project results and best practice to create awareness for the validation of key competences for professionals in the VET sector;
- 📌 intensive networking to attract stakeholders from practice and research and establishing the PROVIDE community;

Find more information on:
www.provide-eu.org





Project Partners



Coordination
BUPNET GmbH,
Göttingen, Germany
www.bupnet.de



PLATO
Platform Opleiding, Onderwijs en
Organisatie B.V.
Universiteit Leiden

PLATO
Leiden, Netherlands
www.plato.leidenuniv.nl



CATRO Bulgaria EOOD Sofia, Bul-
garia
www.catro.com



Stichting Arcus College
Heerlen, Netherlands
www.arcuscollege.nl



Association régionale pour la formation,
l'orientation et l'emploi

Aquitaine Cap Métiers
Bordeaux, France
www.aquitaine-cap-metiers.fr



die Berater®
Vienna, Austria
www.dieberater.com



blended learning institutions' cooperative

blinc eG
Göttingen, Germany
www.blinc-eu.org

website

www.provide-eu.org

This project has been funded with support from the European Commission. This newsletter reflects the views only of the author, and the Commission cannot be held responsible for any use which may be made of the information contained therein.